

NH fuse switch-disconnector size 3, 630 A, bus-mountingconnection top/bottom (33 603)



## Description

### Article

Part No.: 33 603

QUADRON® 60Classic

NH fuse switch-disconnector size 3, 630 A, bus-mountingconnection top/bottom

connection screw M12

for busbars 12, 15, 20, 25, 30 x 10 and section busbars

### System

60Classic

Product group 09

Subgroup 33

pack size 1

EAN 4021267336035

## Advantages of the product

Disconnectors are equipped with arc chambers.

The shock protection is split into 2 for safe connection of the conductors.

Self-closing inspection holes are available in the cover.

Catalog page 2015 : 2/29

eCl@ss 6.1 27142108

eCl@ss 7.1 27142108

ETIM 4.0 EC001040

ETIM 5.0 EC001040

## Approvals

### Standards

IEC 60947-1:2007 + A1:2010 + A2:2014

IEC 60947-3:2008 + A1:2012

### Approvals

IEC (CB), UL, Germanischer Lloyd, KEMA, CCC



for UL feeder circuits >250V

Type number: LTS-3

UL file: E230163, UL category (for USA): IZLT2 <http://www.ul.com>

CCC certificate: 2004010302117263

## Product data

### Electrical data

Rated current (IEC): 630 A

Rated voltage (IEC) AC: 690 V

Rated voltage (IEC) DC: 440 V

Rated current (UL): 600 A

Rated voltage (UL) AC: 600 V

Utilisation category AC-23B (400V)  
AC (IEC 60947-3) : AC-22B (690V)  
AC-21B (690V)  
AC-20B (1000V) at pollution degree 2

visible information required if used at more than 690V AC: do not switch under load

Utilisation category DC specifications: 2 current paths (L1,L3) in series  
DC (IEC 60947-3) : DC-22B (440 V)  
DC-21B (440 V)  
DC-20B (1000V) at pollution degree 2

visible information required if used at more than 440V DC: do not switch under load

#### Power dissipation:

The power dissipation at a typical load of 80% of the rated current results to 38.4 W.  
(The power dissipation for operation with rated current would be 60 W.)

rated isolation voltage  $U_i$  (AC): 800  
V  
Rated surge voltage  $U_{imp}$  : 6 kV  
max. permitted voltage (IEC) AC: 800  
V  
max. permitted voltage (IEC) DC: 800  
V

rated peak withstand current  $I_{pk}$  : 35.2 kA  
cond. rated short-circuit current with fuses: 50 kA / 690V  
approved with fuse links of characteristics: gG  
rated short-time withstand current  $I_{CW}$  : 15,1kA / 1s

SCCR: 100 kA

fuse links IEC 60269-2-1 (I) / DIN VDE 0636-201 size 3 up to 48W power dissipation

Special operating conditions corresponding to IEC / EN 61439-1 may yield to faulty activations of pilot switches and fuse monitors. The operating conditions have to be considered for the analysis of status signals.

Entsprechend den angegebenen AC- und DC- Schalteigenschaften und unter Berücksichtigung der Überlastbedingungen, sind gewisse Abstände zu geerdeten Metallteilen einzuhalten. Nähere Informationen auf Anfrage.

Bei Verwendung als Trennschalter ist die Einhaltung der Abstände nicht erforderlich.

Degree of protection IP30 at front, degree of protection near terminal depends on installation

### **Mechanical data**

W x H x D: 256 x 300 x 160

Weight: 756 kg/100

Poles: 3-pole

for busbars: 12, 15, 20, 25, 30 x 10 and section busbars

front degree of protection: IP30

Type of fastening: patented click mechanism

### **Terminal points**

screw M12 :

Md 35 - 40 Nm

Accessories:

Clamp connection: Cu 150-300mm<sup>2</sup> s(r), f+AE; la. Cu 25x1-13; 6-8Nm torque

single wedge clamp terminal: Cu, Al\* 150-300mm<sup>2</sup> s(r), s(s), f, f+AE; 6-8 Nm torque

double wedge clamp terminal: Cu 2x 150-185mm<sup>2</sup> s(r), s(s), f+AE; 6-8Nm torque

\*Connections are not maintenance-free if aluminium conductors are used.

## Material properties

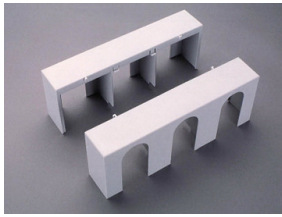
Main body:	temperature stability 125°C, self-extinguishing in acc. to UL 94, creepage resistance CTI 200, halogen-free
Shock protection cover:	temperature stability 125°C, self-extinguishing in acc. to UL 94, creepage resistance CTI 600, halogen-free
Handle:	temperature stability 125°C, self-extinguishing in acc. to UL 94, creepage resistance CTI 200, halogen-free
Adapter plate:	temperature stability 125°C, self-extinguishing in acc. to UL 94, creepage resistance CTI 200, halogen-free
Contacts:	spring-loaded copper contacts, silver plated
Connecting screws:	screw M12, galvanized, chromized

## Version

Variant with electronic fuse monitoring: 33 325

Variant with electromechanical fuse monitoring: 33 162

## Accessories



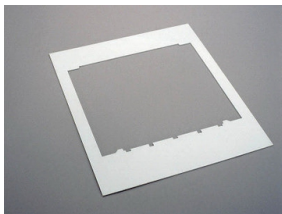
**33 144**

cover for cable lugs, top/bottom attachable  
for NH fuse switch disconnecter size 3



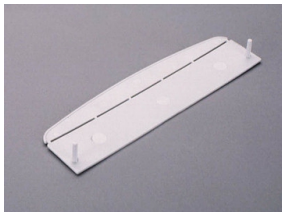
**33 147**

prism terminal, double, for Cu cables  
2x 150 mm<sup>2</sup>  
size 3



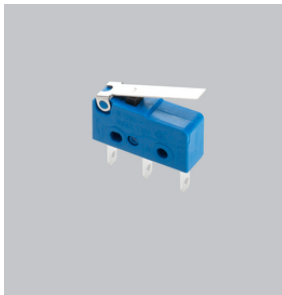
**33 154**

Trim frame  
290 x 330  
size 3



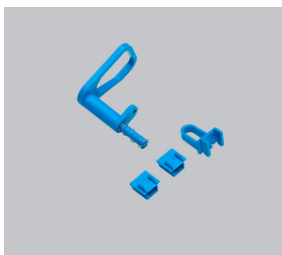
**33 155**

barrier for handle for NH fuse-switch disconnecter size 1-3  
for closing of handle area from rear



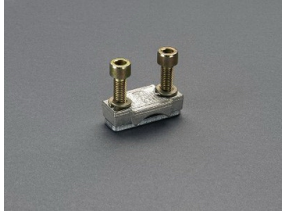
**33 156**

pilot switch  
changeover 250 V AC / 5 A; 30 V DC / 4 A  
Size 1 - 3



**33 157**

lid interlock  
for sealing wire or 3 padlocks with shackle of 4-7 mm  
Size 1 - 3



**33 165**  
clamp connector for Cu cables  
150 - 300 mm<sup>2</sup>  
size 3

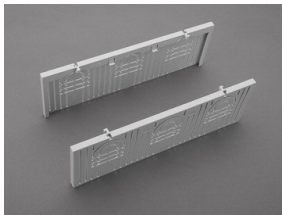


**33 168**  
prism terminal, single, for Cu and Al cables  
150 - 300 mm<sup>2</sup>  
size 3



**wöhner**

**33 385**  
prism terminal, double, for Cu cables  
2x 185 mm<sup>2</sup>  
size 3



**33 419**  
connection shroud  
for NH fuse switch-disconnector size 3, maximum 600A



**33 272**  
extension for 2 cable lugs  
size 3